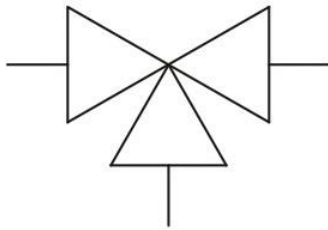
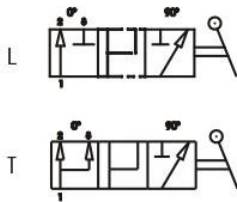


3-Way Carbon Steel



PN up to 500 bar
DN up to 25



Specifications

- Type: ball valve KHB 3way
- Body: block
- Material: 1,0737
- Ball seats: from DN4 up to DN25
- O-Rings: NBR, FKM, EPDM, MVQ
- Operating pressure: 400 Bar depending on valve size and seal materials selected
- Temp. range: -10°C to +100°C depending on seal material selected

High Pressure Ball Valves KH3

KH3 G¹/₂ DN13 2 2 2 2 B A

Type and way of valve _____
KHB3 3-way high pressure ball valves

Valves dimension of inch _____

GAS	ANSI/ASME	SAE
DIN/ISO 228	B1.20.1 NPT	J1926-1
G 1/8	N 1/8	SAE4
G 1/4	N 1/4	SAE6
G 3/8	N 3/8	SAE8
G 1/2	N 1/2	SAE12
G 3/4	N 3/4	SAE16
G 1"	N 1"	SAE20R
G 1" 1/4R	N 1" 1/4R	SAE24R
G 1" 1/2R	N 1" 1/2R	

DIN 2353 HEAVY SERIES	DIN 2353 LIGHT SERIES
8S	6L
10S	8L
12S	10L
14S	12L
16S	15L
20S	18L
25S	22L
30S	28L
38S	35L
	42L

Nominal dimension _____

DN4
DN6
DN10
DN13
DN20
DN25

Body material _____

1 1,0737

Adapter material _____

1 1,0737

Stem material _____

1 1,0737

Ball material _____

1 1,0737

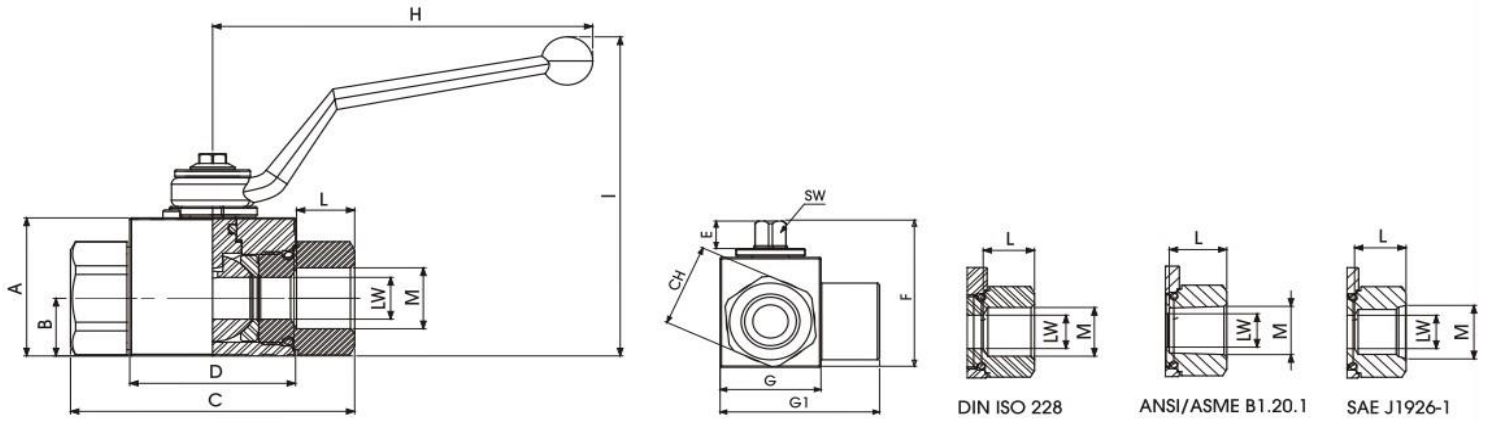
Ball seat material _____

A POM
D PEEK
G PA612
K GEMPTFE
C PTFE

Adapter and stem seal material _____

B NBR
E FKM
F EPDM
L MVQ

Standard



KH3 DIN ISO 228 BSP

Standard

TYPE	PN	DN	A	B	C	D	E	F	G	G1	H	I	L	M	CH	SW	LW	WEIGHT Kg
KH3 G 1/8	400 Bar	4	35	14	71	42	11	49	30	48	110	91	11	G 1/8	24	9	4	0,558
KH3 G 1/4	400 Bar	6	35	14	71	42	11	49	30	48	110	91	15,5	G 1/4	24	9	6	0,536
KH3 G 3/8	400 Bar	10	40	17	73	44	11	54	35	54	110	96	15,5	G 3/8	30	9	10	0,695
KH3 G 1/2	350 Bar	13	43	18	83	48	11	57	37	58	110	99	17	G 1/2	32	9	13	0,825
KH3 G 3/4	350 Bar	20	55	23	95	62	14	73	45	75	180	106	21	G 3/4	41	14	20	1,583
KH3 G 1"	350 Bar	25	65	29	112	66	14	83	55	87	180	116	24	G 1"	50	14	25	2,421
KH3 G 1" 1/4 R	350 Bar	25	65	29	120	66	14	83	55	87	180	116	24	G 1"1/4	55	14	25	2,601
KH3 G 1" 1/2 R	350 Bar	25	65	29	124	66	14	83	55	87	180	116	24	G 1"1/2	60	14	25	2,756

KH3 ANSI/ASME B1.20.1 NPT

Standard

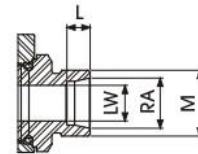
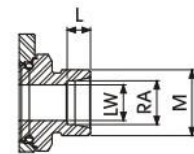
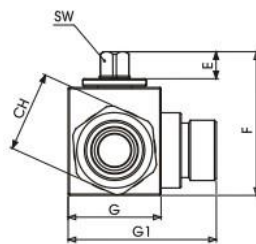
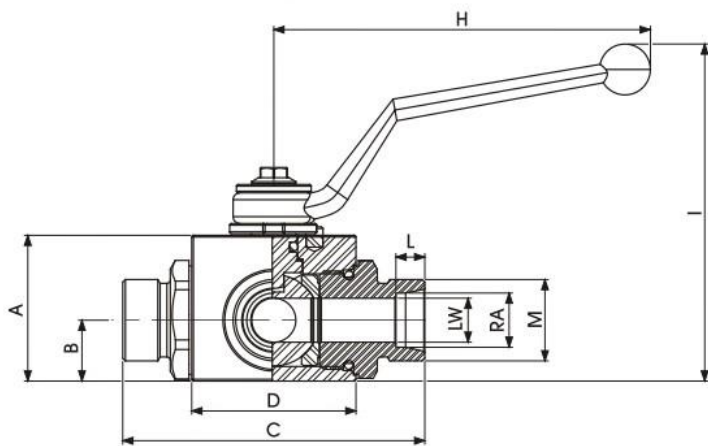
TYPE	PN	DN	A	B	C	D	E	F	G	G1	H	I	L	M	CH	SW	LW	WEIGHT Kg
KH3 N 1/8	400 Bar	4	35	14	71	42	11	49	30	48	110	91	11	N 1/8	24	9	4	0,558
KH3 N 1/4	400 Bar	6	35	14	71	42	11	49	30	48	110	91	17	N 1/4	24	9	6	0,536
KH3 N 3/8	400 Bar	10	40	17	73	44	11	54	35	5	110	96	17	N 3/8	30	9	10	0,695
KH3 N 1/2	350 Bar	13	43	18	83	48	11	57	37	58	110	99	21	N 1/2	32	9	13	0,825
KH3 N 3/4	350 Bar	20	55	23	95	62	14	73	45	75	180	106	21	N 3/4	41	14	20	1,583
KH3 N 1"	350 Bar	25	65	29	112	66	14	83	55	87	180	116	24	N 1"	50	14	25	2,421
KH3 N 1" 1/4 R	350 Bar	25	65	29	120	66	14	83	55	87	180	116	24	N 1"1/4	55	14	25	2,601
KH3 G 1" 1/2 R	350 Bar	25	65	29	124	66	14	83	55	87	180	116	24	N 1"1/2	60	14	25	2,756

KH3 SAE J1926-1

Standard

TYPE	PN	DN	A	B	C	D	E	F	G	G1	H	I	L	M	CH	SW	LW	WEIGHT Kg
KH3 SAE4	400 Bar	6	35	14	71	42	11	49	30	48	110	91	15,5	7/16 UNF	24	9	6	0,536
KH3 SAE6	400 Bar	10	40	17	73	44	11	54	35	54	110	96	16	9/16 UNF	30	9	10	0,695
KH3 SAE8	350 Bar	13	43	18	83	48	11	57	37	58	110	99	17,5	3/4 UNF	32	9	13	0,825
KH3 SAE12	350 Bar	20	55	23	95	62	14	73	45	75	180	106	23	1"1/16 UN	41	14	20	1,583
KH3 SAE16	350 Bar	25	65	29	112	66	14	83	55	87	180	116	23	1"5/16 UN	50	14	25	2,421
KH3 SAE20R	350 Bar	25	65	29	120	66	14	83	55	87	180	116	23	1"5/8 UN	55	14	25	2,601
KH3 SAE20R	350 Bar	25	65	29	124	66	14	83	55	87	180	116	23	1"7/8 UN	60	14	25	2,756

Light & Heavy Series



DIN 2353 HEAVY SERIES

DIN 2353 LIGHT SERIES

KH3 DIN 2353 LIGHT SERIES

Standard

Type	PN	DN	A	B	C	D	E	F	G	G1	H	I	L	M	CH	LW	SW	RA	WEIGHT Kg
Kh3 6L	400 Bar	6	35	14	76	42	11	49	30	48	110	91	7	12X1.5	24	6	9	6	0,53
Kh3 8L	400 Bar	6	35	14	76	42	11	49	30	48	110	91	7	14X1.5	24	6	9	8	0,532
Kh3 10L	400 Bar	10	40	17	76	44	11	54	35	54	110	96	7	16X1.5	30	10	9	10	0,633
Kh3 12L	400 Bar	10	40	17	79	44	11	54	35	54	110	96	7	18X1.5	30	10	9	12	0,665
Kh3 15L	350 Bar	13	43	18	87	48	11	57	37	59	110	99	7	22X1.5	32	13	9	15	0,722
Kh3 18L	350 Bar	13	43	18	87	48	11	57	37	59	110	99	7,5	26X1.5	32	13	9	18	0,861
Kh3 22L	350 Bar	20	55	23	110	62	14	73	45	75	180	106	7,5	30X2	41	20	14	22	1,639
Kh3 28L	350 Bar	25	65	29	117	66	14	83	55	87	180	116	7,5	36X2	50	25	14	28	2,361
Kh3 35L	350 Bar	25	65	29	119	66	14	83	55	87	180	116	10,5	45X2	50	25	14	35	2,361
Kh3 42L	350 Bar	25	65	29	119	66	14	83	55	87	180	116	11	52X2	55	25	14	42	2,456

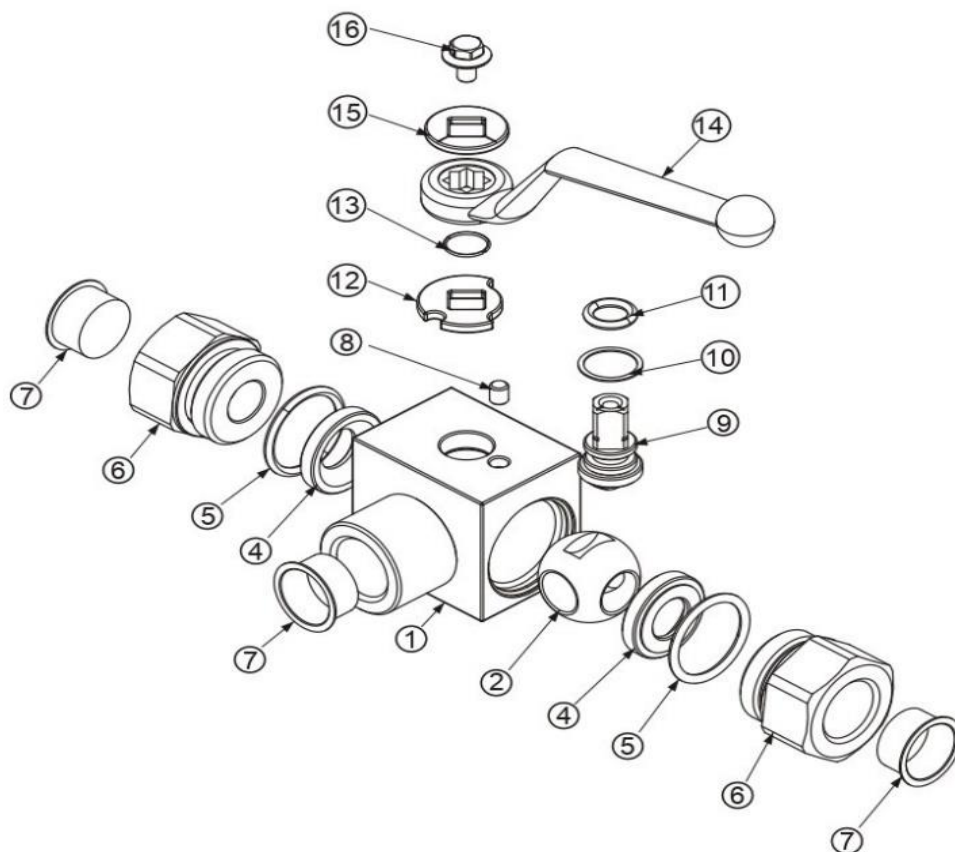
KH3 DIN 2353 HEAVY SERIES

Standard

Type	PN	DN	A	B	C	D	E	F	G	G1	H	I	L	M	CH	LW	SW	RA	WEIGHT Kg
Kh3 8S	400 Bar	4	35	14	76	42	11	49	30	48	110	91	7	16X1,5	24	4	9	8	0,53
Kh3 10S	400 Bar	6	35	14	76	42	11	49	30	48	110	91	7,5	18X1,5	24	6	9	10	0,532
Kh3 12S	400 Bar	10	40	17	76	44	11	54	35	54	110	96	7,5	20X1,5	30	10	9	12	0,633
Kh3 14S	400 Bar	10	40	17	82	44	11	54	35	54	110	96	8	22X1,5	30	10	9	14	0,665
Kh3 16S	350Bar	13	43	18	89	48	11	57	37	59	110	99	8,5	24X1,5	32	13	9	16	0,722
Kh3 20S	350Bar	13	43	18	93	48	11	57	37	59	110	99	10,5	30X2	32	13	9	20	0,861
Kh3 25S	350Bar	20	55	23	111	62	14	73	45	75	180	106	12	36X2	41	20	14	25	1,639
Kh3 30S	350Bar	25	65	29	121	66	14	83	55	87	180	116	13	42X2	50	25	14	30	2,361
Kh3 38S	350Bar	25	65	29	131	66	14	83	55	87	180	116	16	52X2	55	25	14	38	2,655

Ball Valves

KH3 3-WAY HIGH PRESSURE BALL VALVES



On request

- Reduced bore
- O-Ring in EPDM, FFKM, MQV
- Seals in PEEK, PA 612, RPTFE, GEMPTFE
- Special Threads
- Stem in stainless steel 1,4404
- Ball in stainless steel 1,4404
- Pressure Class PN 100 to PN 400
- Pneumatic and electrical actuator
- Security block
- Locking device

Pos	Description	Material	Q.tà
1	Body	1,0737	1
2	Ball	1,0737	1
3	Ball seat	POM	2
4	Adapter o-ring	NBR	2
5	Adapter	1,0737	2
6	Caps	PVC	3
7	Spine	1,0737	1
8	Stem	1,0737	1
9	Stem ring	POM	1
10	Stem o-ring	NBR	1
11	Washer	1,0116	1
12	Seeger	1,4301	1
13	Handle	ZINC	1
14	Washer	1,0116	1
15	Screw	Din 6921 8.8	1