

2 Way Carbon Steel



CHECK
VALVE

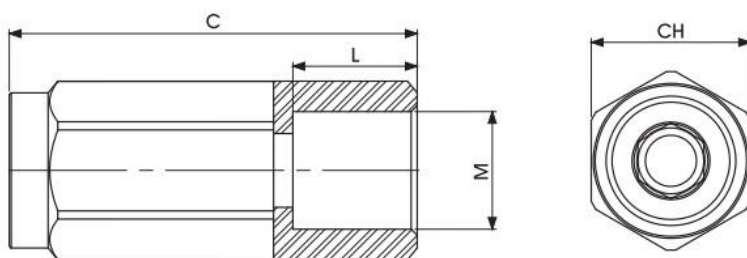


INLINE HIGH PRESSURE CHECK VALVES CV

		CV	G 1/2	CS
Type and way of valve CV check valves				
Valves dimension of inch				
GAS	ANSI/ASME			
DIN/ISO 228	B1.20.1 NPT			
G 1/4	N 1/4			
G 3/8	N 3/8			
G 1/2	N 1/2			
G 3/4	N 3/4			
G 1" 1/4	N 1" 1/4			
G 1" 1/2	N 1" 1/2			
G 2"	N 2"			
Material Carbon steel CS				

Specifications

- Type: check valve CV
- Body: exagone
- Material: 1,0737/1,4749
- Ball seats: from 1/4 to 2"
- Operating pressure: PN500
- Temp. range: -10°C to +100°C depending on seal material selected

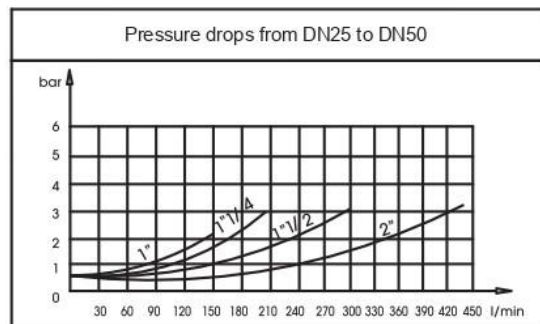
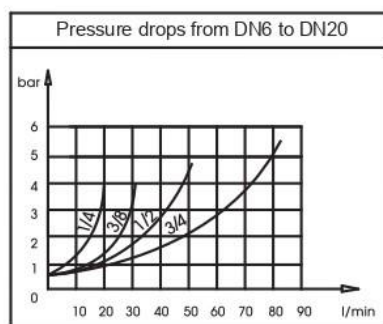
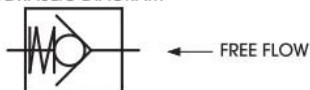


CV DIN ISO 228 BSP
Standard

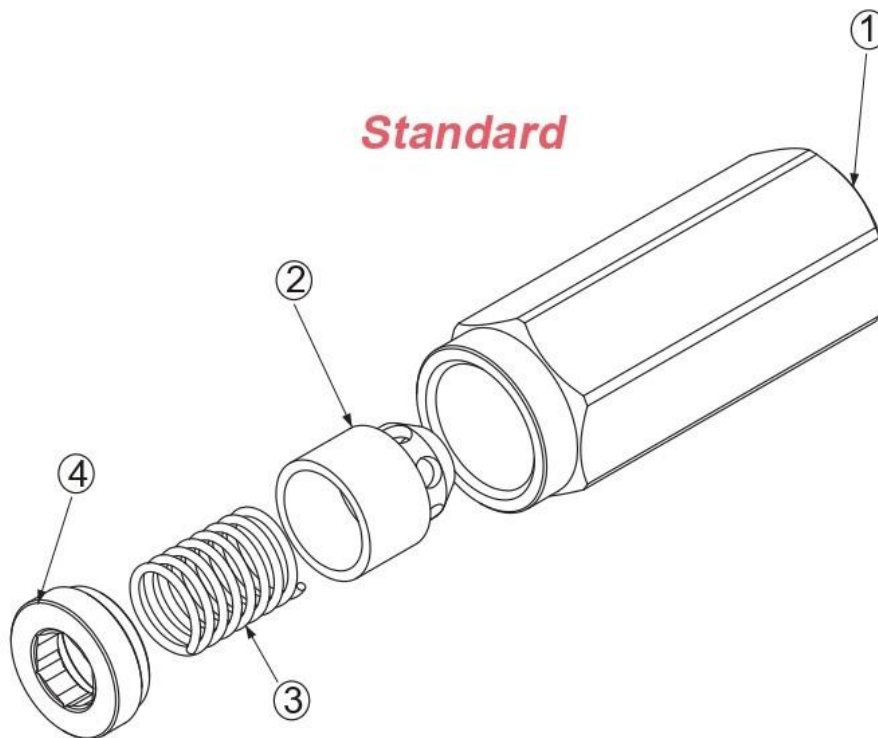
TYPE	PN	DN	MAX FLOW L/m	CRACKING PRESSURE	C	L	M	CH	Kg.
CV G 1/4	400 Bar	6	15	0.5/1 BAR	54	15	G 1/4	19	0,1
CV G 3/8	400 Bar	10	30	0.5/1 BAR	64	15	G 3/8	24	0,18
CV G 1/2	400 Bar	13	50	0.5/1 BAR	74	17	G 1/2	27	0,23
CV G 3/4	400 Bar	20	90	0.5/1 BAR	85	21	G 3/4	35	0,45
CV G 1"	400 Bar	25	150	0.5/1 BAR	109	24	G 1"	41	0,73
CV G 1" 1/4	350 Bar	32	200	0.5/1 BAR	122	24	G 1" 1/4	55	1,49
CV G 1" 1/2	350 Bar	40	300	0.5/1 BAR	137	24	G 1" 1/2	60	2
CV G 2"	350 Bar	50	430	0.5/1 BAR	159	27	G 2"	70	2,7

PRESSURE DROPS

HYDRAULIC DIAGRAM



INLINE HIGH PRESSURE CHECK VALVES



Pos	Description	Material	Q.tà
1	Body	1,0737	1
2	Poppet	1,4749	1
3	Spring	1,0116	1
4	ring	1,0737	1

On request

- Special Threads
- Pressure Class PN 500
- Spring closed: 1BAR - 3BAR - 5BAR - 8BAR

Check Valve, Model : RHD/RHZ/RHV/RHF

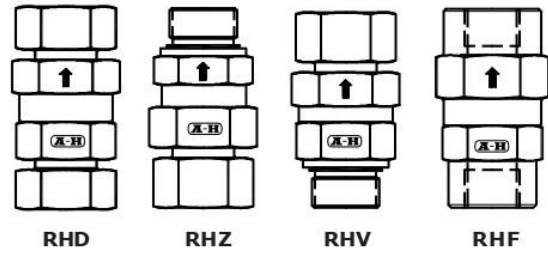
Ref. No : H04068 Release Jan 2006 (Dimensions in mm)

Description

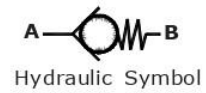
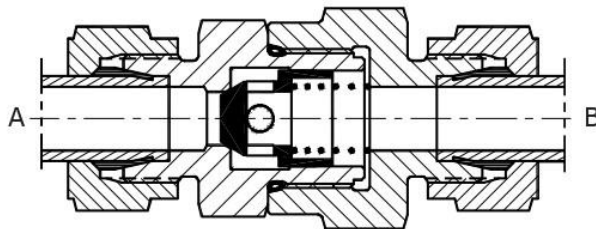
Poppet type valves.
Allows free flow from port A to B and offer leakage free closure in opposite direction.

Four basic models : RHD, RHZ, RHV and RHF
Seven standard sizes : NG 06, NG 08, NG 10, NG 15, NG 20, NG 25, NG 30

Four cracking pressure : 0.5, 1.5, 3 and 5 bar.



Section



Technical Specifications

- Construction Poppet type
- Mounting style In line
- Mounting position Optional
- Cracking pressure available 0.5, 1.5, 3, and 5 bar
- Code for cracking pressure options Omit, B, C, and D respectively.
- Flow direction From port `A' to port `B'.
- Operating pressure 315 bar.
- Hydraulic medium Mineral oil.
- Viscosity range 10 cSt to 380 cSt.
- Fluid temperature range -20 °C to +70 °C.
- Fluid cleanliness requirement As per ISO 19/16 or better.
- Maximum flow handling capacity Refer graph.

Check Valve, Model : RHD/RHZ/RHV/RHF

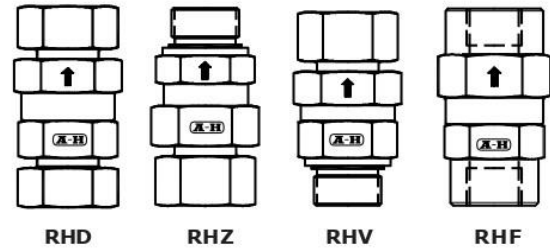
Ref. No : H04068 Release Jan 2006 (Dimensions in mm)

Description

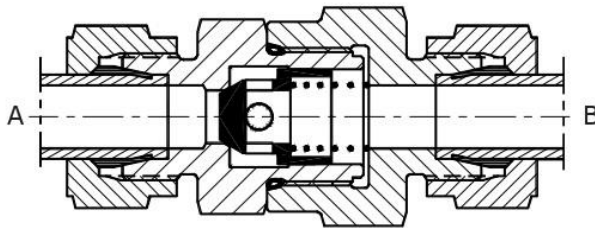
Poppet type valves.
Allows free flow from port A to B and offer leakage free closure in opposite direction.

Four basic models : RHD, RHZ, RHV and RHF
Seven standard sizes : NG 06, NG 08, NG 10, NG 15, NG 20, NG 25, NG 30

Four cracking pressure : 0.5, 1.5, 3 and 5 bar.



Section



Technical Specifications

- Construction Poppet type
- Mounting style In line
- Mounting position Optional
- Cracking pressure available 0.5, 1.5, 3, and 5 bar
- Code for cracking pressure options Omit, B, C, and D respectively.
- Flow direction From port `A' to port `B'.
- Operating pressure 315 bar.
- Hydraulic medium Mineral oil.
- Viscosity range 10 cSt to 380 cSt.
- Fluid temperature range -20 °C to +70 °C.
- Fluid cleanliness requirement As per ISO 19/16 or better.
- Maximum flow handling capacity Refer graph.

Check Valve, Model : RHD/RHZ/RHV/RHF

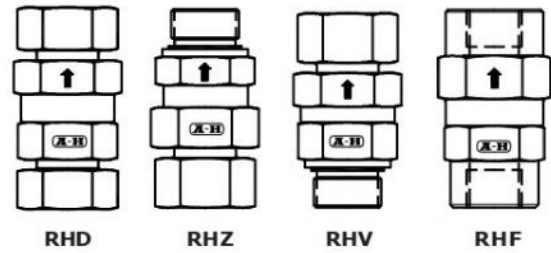
Ref. No : H04068 Release Jan 2006 (Dimensions in mm)

Description

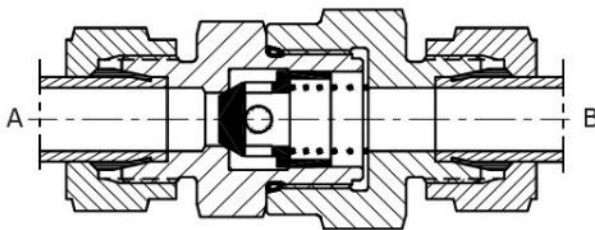
Poppet type valves.
Allows free flow from port A to B and offer leakage free closure in opposite direction.

Four basic models : RHD, RHZ, RHV and RHF
Seven standard sizes : NG 06, NG 08, NG 10, NG 15, NG 20, NG 25, NG 30

Four cracking pressure : 0.5, 1.5, 3 and 5 bar.



Section



Technical Specifications

- Construction Poppet type
- Mounting style In line
- Mounting position Optional
- Cracking pressure available 0.5, 1.5, 3, and 5 bar
- Code for cracking pressure options Omit, B, C, and D respectively.
- Flow direction From port 'A' to port 'B'.
- Operating pressure 315 bar.
- Hydraulic medium Mineral oil.
- Viscosity range 10 cSt to 380 cSt.
- Fluid temperature range -20 °C to +70 °C.
- Fluid cleanliness requirement As per ISO 19/16 or better.
- Maximum flow handling capacity Refer graph.

Check Valve, Model : RHD/RHZ/RHV/RHF

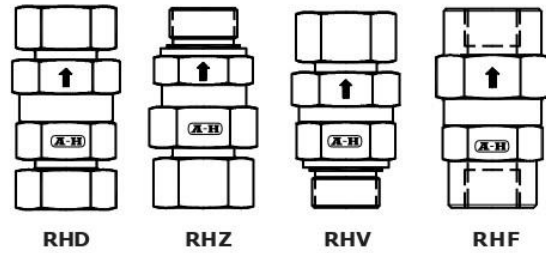
Ref. No : H04068 Release Jan 2006 (Dimensions in mm)

Description

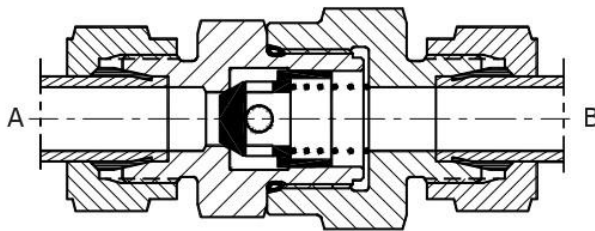
Poppet type valves.
Allows free flow from port A to B and offer leakage free closure in opposite direction.

Four basic models : RHD, RHZ, RHV and RHF
Seven standard sizes : NG 06, NG 08, NG 10, NG 15, NG 20, NG 25, NG 30

Four cracking pressure : 0.5, 1.5, 3 and 5 bar.



Section



Technical Specifications

- Construction Poppet type
- Mounting style In line
- Mounting position Optional
- Cracking pressure available 0.5, 1.5, 3, and 5 bar
- Code for cracking pressure options Omit, B, C, and D respectively.
- Flow direction From port `A' to port `B'.
- Operating pressure 315 bar.
- Hydraulic medium Mineral oil.
- Viscosity range 10 cSt to 380 cSt.
- Fluid temperature range -20 °C to +70 °C.
- Fluid cleanliness requirement As per ISO 19/16 or better.
- Maximum flow handling capacity Refer graph.